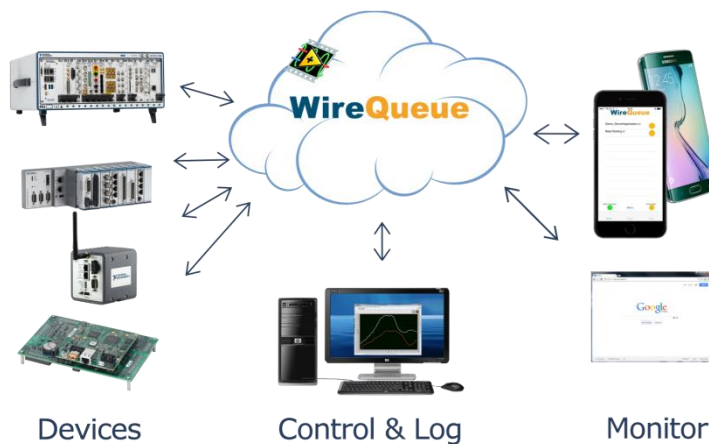


How to start using WireQueue



To get up and running you will need to:

- create a new server that only you can access. It has to have a unique *Server Name*
- create an *Admin login/Admin password* so that you can administer your server
- create a *Username/Password*. Only clients that know these credentials are allowed to connect to the server.

Clients can be of many different types, e.g.:

- a PC running LabVIEW
- a cRIO running LabVIEW RT
- a smartphone running Android
- a tablet running iOS
- an ordinary Web browser

Below are the steps you need to go through to get this working:

1. Goto www.wirequeue.com and request an Administrator Account.
You have to fill in what you want the *Server Name* to be.
You will then get a mail containing an *Admin login* and *Admin Password* for this server.
2. Use the credentials from step 1 to log in to the Administration Web Page at www.wirequeue.com.
3. Note the parameters printed to the left of the page under WireQueue Server Info header.
You will need them to use the LabVIEW driver or log into the Apps.
4. Scroll down to create a new WireQueue user; fill in Username and Password and press CREATE USER.
5. You can now start using WireQueue!



1.1 Using the LabVIEW driver

To use the LabVIEW driver you must fill in the following parameters into the Init.vi or on the front panel of one of the provided examples:

- Server Instance
- Server port
- Username
- Password
- ClientID

You can use the same credentials anywhere. The only thing that has to be unique for every device on your server is its *ClientID*. In the LabVIEW examples *ClientID* is already filled in, but when you write your own code you must choose a value you feel is relevant, just keep it unique on your server.

1.2 Using the Mobile Apps

You use the same credentials when logging in to a Mobile App:

- Username
- Password
- Server instance
- Server port

However, you can't set the *ClientID*. It is always set to the same value as the *Username*.

1.3 Using the Web Client

The Web Client can be found at www.wirequeue.com/webclient/

When logging in to a Web Client the parameters are slightly different:

- Username
- Password
- Server name

Here also *ClientID* = *Username*.

If another device connects to your server with a *ClientID* that is already in use, the other device that uses the same *ClientID* will be kicked off the server.

To avoid these conflicts and make it possible to use more than one mobile or web client simultaneously, you simply have to create Usernames/Passwords on the Admin web page.